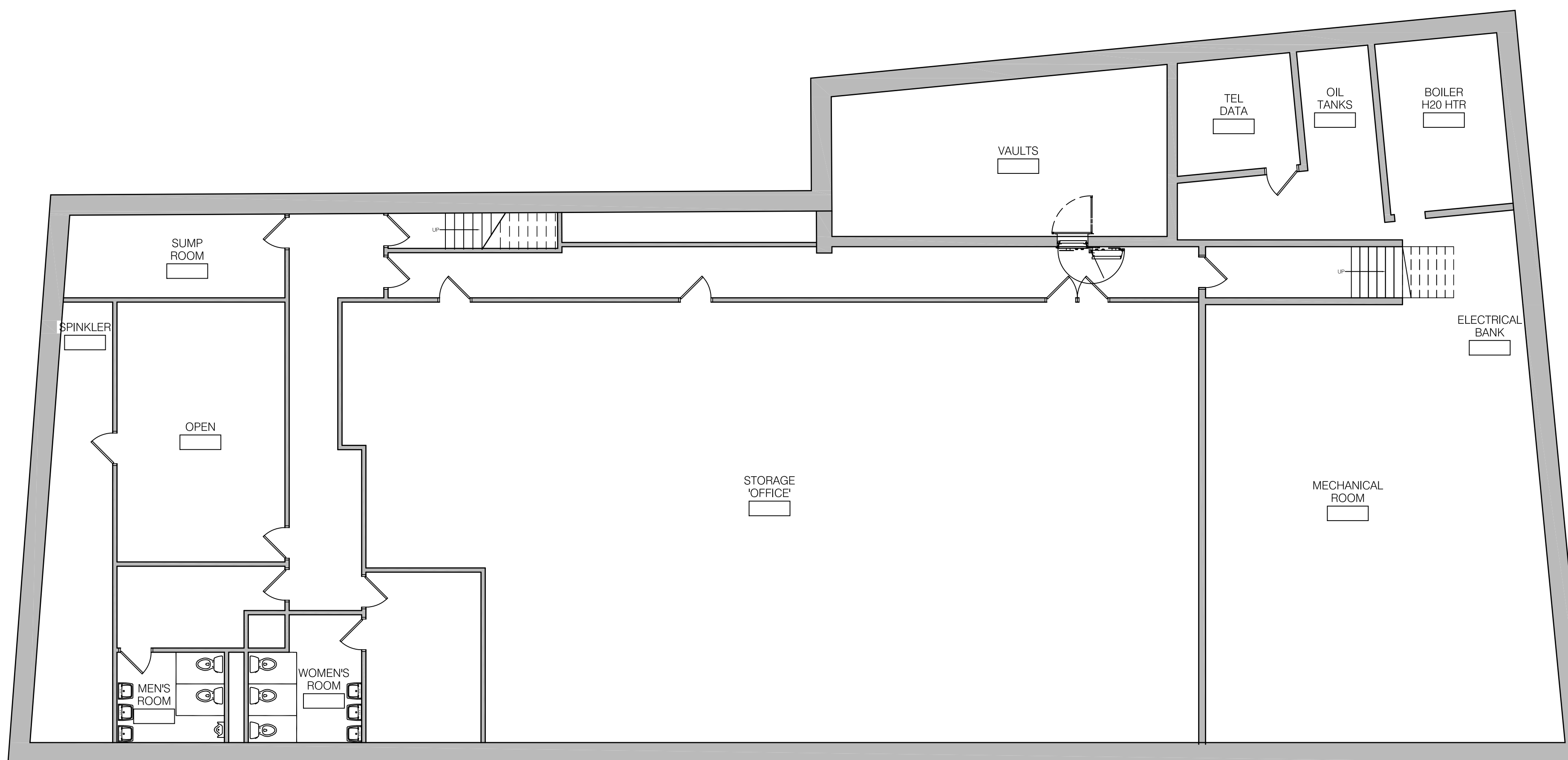


1 First Floor Plan
1/8" = 1'-0"



2 Basement Floor Plan
1/8" = 1'-0"

NOTES

PROJECT
Plymouth Growth and Development Corporation
 4 North Street
 Plymouth MA 02360

CLIENT
 Plymouth Growth and Development Corporation (PGDC)
 Park Plymouth
 40 Court Street
 Floor 1 Unit 1
 Plymouth MA 02360
 Tel: 508.747.5929
 Contact: Diamond Eggen
 degen@parkplymouth.com

SCALE

| NO. | DATE | REVISION | BY |
|-----|------|----------|----|
| | | | |
| | | | |
| | | | |
| | | | |

R2 ARCHITECTS
 508.746.4646
 r2arch.com
 32 Court Street
 Plymouth, MA 02360

| | |
|-------------|------------|
| PROJECT MGR | CHECKED BY |
| JW | RFR |
| JOB NO | DRAWN BY |
| 20710 | JW |
| SCALE | DATE |
| As Noted | 11.11.2020 |

JOB TITLE
 EXISTING FLOOR PLANS

SHEET NO

A0.01

\\ACAD\PROJ\20710_PGDC\Drawing_Files\Base_Files\20710_PGDC_base_plan_EXISTING.dwg Nov. 12. 2020. 1:35 pm BREEISS